



INFORMATION FOR PARENTS AND CARERS

'TO PROVIDE LEARNING OF THE HIGHEST QUALITY WHICH WILL ENABLE EVERYONE TO FULLY DEVELOP THEIR CAPABILITIES.'

Skipton Girls' High School



TABLE OF CONTENTS

WELCOME	3
Key Term Dates:	3
THE BASICS	4
The School Day	4
Behaviour for Learning	5
Student Code of Conduct	5
Attendance and Punctuality	6
Reporting Absence	7
Punctuality Matters	8
School Uniform	8
Equipment for Learning	10
Student Planner	11
Rewards at School	11
PASTORAL CARE FOR YOUR CHILD	12
The Student Progress and Wellbeing Team	12
Vertical Tutor Groups	13
The Student Executive	14
Special Educational Needs	14
Medical Arrangements	15
COMMUNICATION BETWEEN HOME AND SCHOOL	16
How Do I Contact My Child's Teachers?	16
SGHS - A PROGRESSIVE AND INNOVATIVE SCHOOL	17
The Laptop Programme	17
Firefly - Virtual Learning Environment	17
Communication via Arbor	18
THE KEY STAGE 3 & KEY STAGE 4 CURRICULUM	19
Music Education	20
Modern Foreign Languages	20
Faculty Subject Support	20
Extra-curricular and Enrichment activities	21
OTHER INFORMATION	22
Guidelines on Home Learning	22
Personal Property	22
Mobile Phones	23
Parents in Partnership	23
Friends of SGHS	23
Transport	23
Safety and Security	24
Charging For School Activities	24
Pupil Premium	25
Year 7 residential	27
VISION AND VALUES STATEMENT	27

Welcome

We hope that your child is looking forward to joining Skipton Girls' High School. This information booklet aims to give you key information and guidance that you are likely to want to know before your child joins us.

The first point to make is that you and your child do not have to wait until your start date to begin your relationship with the school.

We believe that Skipton Girls' High School is a great place to learn and for your child to develop into a well-rounded, confident individual. We look forward to developing our relationship with both of you over the coming years.



Key Term Dates:

AUTUMN TERM 2025

School Opens for Year 7 & Year 12 – *Wednesday 3rd September*

Half Term – *Monday 27th October - Friday 31st October inclusive*

School Opens – *Monday 3rd November and closes Friday, 19th December*

SPRING TERM 2026

School Opens for all students – *Monday 5th January*

Half Term – *Monday 16th February to Monday 23rd February inclusive*

Training Day - Monday 23rd February

School Closes – *Friday 27th March*

SUMMER TERM 2026

School Opens – *Monday 13th April*

May Day – *Monday 4th May*

Half Term – *Monday 25th May to Friday 29th May inclusive*

School Closes – *Friday 17th July*

Training Days – Monday 20th July

The Basics

The School Day

The school day starts with the first lesson at 8:50 a.m. and ends at 3:40 p.m. The school operates on a 2-weekly timetable (Week A and B). Students are expected to be on site by 8:45 a.m. at the latest and outside their classroom 5 minutes before the start of a lesson.

Morning		Afternoon	
8:50 - 9:50	Period 1	12:15 - 1:10	Lunch
9:50	Movement time	1:10 - 1:35	Tutor time
9:55 - 10:55	Period 2	1:35 - 2:35	Period 4
10:55 - 11:15	Break	2:35 - 2:40	Movement time
11:15 - 12:15	Period 3	2:40 - 3:40	Period 5

From 3:45 p.m. onwards each day enrichment and extension activities take place. The school operates a Homework Club on Monday to Thursday until 5:00 p.m. for students wishing to use the Learning Resource Centre. Please note that school opens at 8:00 a.m. and closes at 5:00 p.m.

Excellent catering facilities are available on a cashless system - students may purchase breakfast before school, a snack at break and their lunch on a cafeteria basis. They may bring packed lunches if they wish. All food is paid for using the lanyard/finger scanning system linked to your child's Parent Pay account (see later section).

Access to School

Students enter school through the pedestrian access gates on Gargrave Road. School buses stop at the front of school. It is not permitted for parents to drop their child off in the staff car park, the side entrance or on the zig-zagged line at the front of school. Students crossing the road opposite school must use the pedestrian crossing at all times. This helps to ensure all members of our school community stay safe.

Who to Contact

Reception – Tel 01756 707600 Our main reception desk will help you if you need to get a message to them during the school day. They will also be able to put you through to the following contacts:

Personal Tutor - for general enquiries

Subject Teachers - for specific questions or concerns about a particular subject

Student Progress - to address any of the needs your child may have

Student Services – Tel 01756 707610 to report your child's absence, to arrange to collect your child or deliver them to school outside the normal times e.g. medical appointment

Behaviour for Learning

The maintenance of a positive school ethos which celebrates achievement and shows mutual respect for its community is seen as a partnership between students, parents and staff. The development of self-discipline, courtesy and consideration for others is of prime importance. Matters of misbehaviour are dealt with by Subject teachers, Personal Tutors and, if necessary, Senior Staff. Parents will be involved in such circumstances and sanctions such as an "on report" system would be discussed. Serious offences, such as bullying or truancy, are rare; should they occur, they are dealt with by members of the Senior Leadership Team, in consultation with parents. Please take time to read our Behaviour for Learning Policy and Code of Conduct which can be found on our website.



Student Code of Conduct

ALWAYS

- Show mutual respect and tolerance of each other and all staff.
- Arrive punctually to school and lessons.
- Be ready to participate fully in learning at all times.
- Dress smartly for school, keeping to the school uniform code.
- Be organised and appropriately equipped for lessons.
- Show respect for the school environment at all times.
- Move thoughtfully around the building, taking notice of movement and examination signs and keeping to the left on staircases and corridors.
- Show consideration for others by holding the door open for peers, staff and visitors.
- Follow school rules with regard to tutor rooms, dining hall and the use of specialist spaces.
- Ensure that public behaviour upholds the school's positive reputation.

NEVER

- Use your mobile phone during the school day.
- Run or shout in the corridor.

- Drop litter both in and outside of school.
- Bring valuables, large amounts of money.
- Use chewing gum in school.

Attendance and Punctuality

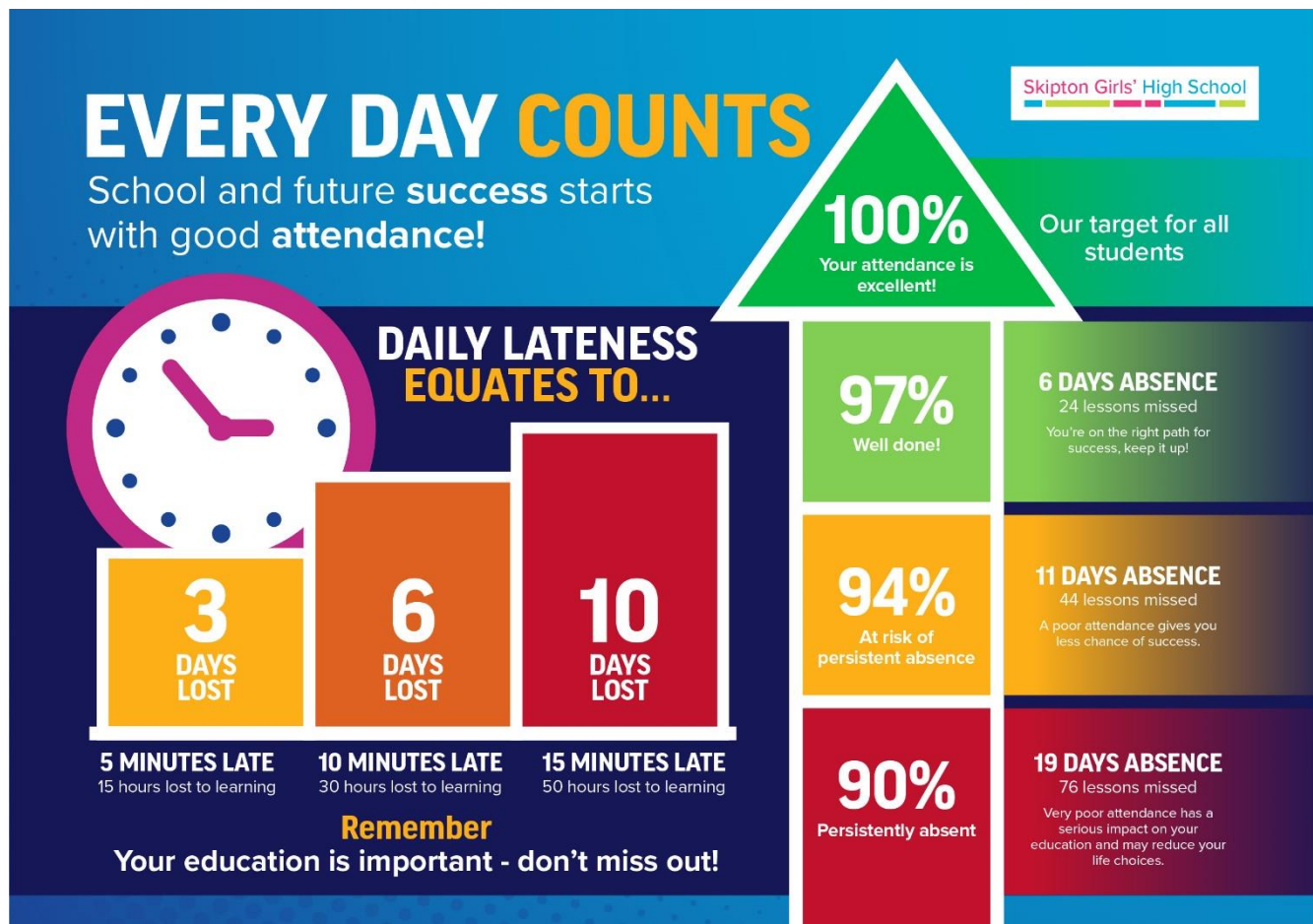
Excellent attendance and punctuality are essential for students' success at Skipton Girls High School; establishing positive life habits that enable students to achieve their full potential.

Through attending regularly, students can:

- Engage in essential learning and other school social events.
- Build friendships and develop social groups.
- Develop life skills necessary for future success.

Students are rewarded for 100% attendance at the end of every term as an acknowledgment of their commitment to the school and their studies.

The visual below shows the impact of days missed and poor punctuality on a child's learning.



Reporting Absence

1. Parent/Carers must report absence **on every day** to the school that a student is absent **before 8:30am** via the absence line; **01756 707610** or emailing: absence@sghs.org.uk
2. When absence is due to illness, parents/carers must always inform the school of the nature of the illness.
3. If the school is not notified of a student absence parents/carers will be contacted by phone call or email by the Student Services team.
4. If parents/carers give no reason for absence, then this is an **unauthorised absence**. Failure to notify school is a **safeguarding concern**.
5. Skipton Girls' High School will request a medical letter when a student is absent for 10 consecutive days or more.
6. Term time leave of absence will only be granted by the Deputy Head teacher in exceptional circumstances, applications must be made at least 3 weeks before the absence by completing an **exceptional circumstances** form available from studentservices@sghs.org.uk
7. Medical and dental appointments should be made outside of school hours, wherever possible. However, if they are unavoidable in school time email absence@sghs.org.uk in advance of the appointment.

Punctuality Matters



On Time

All students should be in school no later than **8.45am**.



Late

Students who arrive after **8.50am** will be marked as late (L).



Unauthorised Absence

Students who arrive after **9.10am** will be marked as a (U) code which is unauthorised absence.

School Uniform

We hold high standards for how uniform should be worn by all students in Year 7-11.

KS3 & KS4

- Dark navy sweatshirt, round neck, with school logo
- Navy and white cotton striped shirt
- Dark navy regulation skirt, with school logo or dark navy trousers, straight-leg
- Outdoor coat – plain navy or plain black, (Hoodies and non-school sweatshirts should not be worn in place of a coat)
- If you cover your head a plain dark navy or black scarf may be worn
- Footwear – plain black, flat or low heels
- Tights must be plain opaque black or navy
- All students are issued with and must wear their personal lanyard.



Backless, toeless shoes, canvas pumps and trainers are not appropriate footwear.

Students with pierced ears may wear one pair of small studs in each ear; other than this no other body piercings e.g. tongue or nose, are allowed. A cross or other religious symbol may be worn as long as it is not visible.

At Key Stage 3 make up is not allowed. At Key Stage 3 & Key Stage 4 hair should be kept in a neat style. Extremes of hairstyle and unnatural bleaching or dyeing are not permitted.

We cannot accept gel or acrylic nails on the grounds of Health & Safety. Key Stage 3 students will be asked to remove nail varnish using removal wipes. At Key Stage 4 nail varnish must be discreet.

Students and parents should assume that any specific items of clothing or jewellery not mentioned above are not allowed. If there are any other issues concerning uniform, these need to be discussed with their Personal Tutor. Staff and governors will insist that all students adhere to our uniform policy.

We believe that high standards of personal appearance equate to high standards in all other matters. Appropriate action will be taken to ensure that, in the interests of all students, these standards are maintained.

Regulation shirts, skirts, and trousers are produced by well-established manufacturers, and can be purchased through *Skip to School, Water Street*.

All items of clothing must be marked with the student's name.

Physical Education Kit - All Students

Compulsory Items

- Navy blue polo shirt with logo
- Navy blue PE sweatshirt with logo
- Navy blue leggings with SGHS initials
- One of either:
 - Navy blue skort with logo, or
 - Navy blue shorts with logo, or
 - Navy blue trackpants
- Shin pads
- Gum shield
- Navy blue football socks
- Pair of non-marking trainers

Optional Items

- Additional SGHS navy bottoms (skort/shorts/trackpants)
- Thermal long sleeved top
- Sport hijab

PE kit can only be sourced from *Skip to School, Skipton*.

Please ensure that each item of PE kit is marked with your child's name.

If for any reason a student is unable to adhere to this dress code temporarily, the parent/carer will be expected to provide a written note explaining the temporary situation.

GAMES KIT (INDOOR & OUTDOOR)



GYMNASTICS AND DANCE KIT



Equipment for Learning

All students are required to have the following equipment with them each day:

- A pencil case
- A pen, pencil, rubber, whiteboard pen, ruler & highlighter
- A maths set and a scientific calculator **Casio fx-85GT CW**.
- Laptop
- Student planner
- A reading book

Student Planner

All students will have access to a digital planner on Firefly which will be demonstrated and explained in September. If a student would prefer a paper planner, they are welcome to bring their own.

Rewards at School

We actively promote a culture of praise and reward within the school community and celebrate the personal and academic successes of individuals in several ways. Students are recognised through both

verbal and written acknowledgements in school publications, whole school gatherings, year assemblies and prize giving ceremonies. Praise postcards, congratulation letters and house points are also given throughout the year. In addition to this we also highlight student successes on school display boards, plasma screens around the school environment and in the school newsletter. Our school website also features 'Student successes'.

Categories in which teachers recognise students for praise and reward include: Excellent engagement in learning, creativity and imagination, leadership, enthusiasm, embracing challenge, aiming high, teamwork, citizenship and community, independence, progress, participation, extra-curricular involvement, going above and beyond, curiosity, kindness and being supportive of others.

Students are encouraged throughout their time at Skipton Girls' High School to take on leadership positions whereby they can represent the interests of other students and give back to the school community in a service role.



Pastoral Care for Your Child

Looking after the personal and emotional wellbeing of your child is essential for academic progress. This section will give you a brief overview of some of the systems we have in place to ensure your child feels happy, safe and secure whilst at school.

The Student Progress and Wellbeing Team

The Student Progress and Wellbeing team consists of staff whose role is to work directly with your child to address any of the needs they may have. At the most fundamental and important level, the first point of contact with this team is your child's Personal Tutor. From there we have a range of services from settling in groups to bespoke pastoral support for individual needs including counselling services, mentor support to medical teams.

Deputy Head Teacher, Designated Safeguarding Lead - *Mrs F. McMillan*

Learning Director Student Progress - *Mrs J Marchesi*

Student Progress Coordinator Years 7 & 8 - *Mrs P Kendrick*

Student Progress Coordinator Years 9 & 10 – *Ms N Hussain*

Student Progress Coordinator Year 11 – *Mrs J Marchesi*

Student Progress Coordinator Years 12 & 13 – *Miss S Smith*

Head of Years 7 & 8 – *Mrs M Winter*

SENDCo: *Mrs E Pitt*

Vertical Tutor Groups

At Skipton Girls' High School each tutor group is made up of students from Year 7 through to 13 (three or four from each year). Our students say that what they experience is a sense of family as they stay in these groups for the duration of their time at SGHS. This gives your child the opportunity to be mentored by older students and gain in confidence about what is involved later in school life and beyond school.

On average there are 26 students in each tutor group and 34 tutor groups altogether. All tutor groups belong to one of four Houses: **Brontë, Johnson, Franklin and Curie**. As part of our whole school rewards programme, we regularly have House Competitions to suit everyone's interests.

The Personal Tutor will play a key role in your child's life at school by providing continuity and security. They will be responsible for monitoring both the academic and social progress of your child. In most cases, the Personal Tutor will be your first point of contact if you wish to get in touch with the school about any issues. Tutor time is an integral part of the school day and part of the Personal Development Time programme. Attendance is compulsory as this is where vital information is circulated to students. Personal tutors discuss progress and any issues with individuals to help support students' learning and maximise their enjoyment of school life. You can contact your child's personal tutor via SIMS in-touch.



The Student Executive

The school has a body of students called the Student Executive. This group is comprised of students from all year groups who work with teaching staff on issues related to school improvement. The Student Executive works with larger groups of students to ensure their views are heard on a variety of issues. This is a prestigious role and students are invited to apply to become members of the Student Executive.



Special Educational Needs

At SGHS we feel it is important to understand how our students learn and to support them in achieving their potential. We have a screening programme which we use with all students on entry to the school which provides us with a profile of each student's learning and which allows us to provide personalised support where needed. We work with students, parents and specialist staff, where appropriate, to identify how best to meet any individual needs. If your child has been identified as having any level of SEND please contact the SENDCo as soon as possible so that we can ensure provision of support is in place in time for your child's date of entry.

Medical Arrangements

If a student feels unwell during the school day a member of the teaching staff will alert Student Services. If they are no better after a rest in the Quiet Room, parents will be contacted to collect. If it is considered necessary to take a student to hospital, every effort will be made to inform parents. It is essential that school has current telephone numbers or an address where parents can be contacted during the school day. Parents are asked to inform the school in writing of changes of address or telephone numbers.

If your child has a health care plan or any medical needs e.g., is asthmatic, please provide a copy of the health care plan and as much information as possible. A member of Student Services will then contact you in due course.

The school is able to make referrals to the Healthy Child Team. The HPV vaccination which helps to prevent cervical cancer is offered to students in Year 8. Other vaccinations are part of the General Practitioner programme and are not offered in school.



Communication Between Home and School

The school places great importance on links with parents and effective communication between home and school is vital. You can contact the school at any time, but there is also a formal programme. This includes:

- Parents Evening - opportunity to come into school to discuss your child's progress with their subject teachers
 - Student reports at Skipton Girls' High School are designed to fully involve the student and to ensure that they have meaningful learning conversations with their personal tutors about their progress. They are designed to provide you with timely, relevant and personalised feedback about your child. There are 2 elements to the reports:
 - **Subject Teacher Assessments** - these show how your child is progressing against curriculum expectations and their teacher's view on their commitment to learning for each subject. Reports also include historical data so you can see how your child is progressing over time.
 - **Tutor Reports** - these include a written comment. This is constructed from a learning conversation between your child and their tutor and contains information on your child's progress, contributions at tutor time, attendance and extra-curricular activities which they may take part in. It also includes specific and timely written targets which the student owns and should act upon. The written targets are reviewed at the next reporting period.
- Each year group receives three reports per annum. The dates when these are distributed are available on the 2025 - 2026 School Calendar. Staff are more than willing to talk to parents about a student's education or personal problems at other times and will get in touch with parents if serious problems arise at school. The normal first point of contact for parents is the Personal Tutor.

How Do I Contact My Child's Teachers?

In order to ensure we have the correct information, please complete all of your contact details, including email addresses and mobile numbers on the Data Collection Form.

In the meantime, if you wish to contact school please email reception@sghs.org.uk or telephone on 01756 707600. From September first contact should be with your child's form tutor which will be explained at the meeting with parents and carers on 26th June.

School Newsletter

To keep parents up to date with school events and achievements we provide a newsletter which is accessed via the website or Firefly on a half termly basis.

SGHS - A Progressive and Innovative School

Developments in technology are rapidly changing our lives both at work, school and home all the time. We believe that if we are to prepare our students for the competitive, technologically driven world we live in, they should be able to access all the advantages that technology can afford them.

The Laptop Programme

The entire school site is covered by a wireless network which means that wherever a student is in the school they have full network and internet access. The school operates a laptop programme which, allows parents to purchase over three years a lightweight and high spec laptop. This laptop is fully insured with a three year on-site warranty and the school will pre-load it with industry standard software such as Microsoft Office Pro, Adobe Design and Creative Suites which includes Photoshop and Dreamweaver. Your child can use it both in school and at home. Since September 2012 every year group in school has either a netbook or laptop device. The Laptop Scheme will be explained and further details distributed in the final half term.

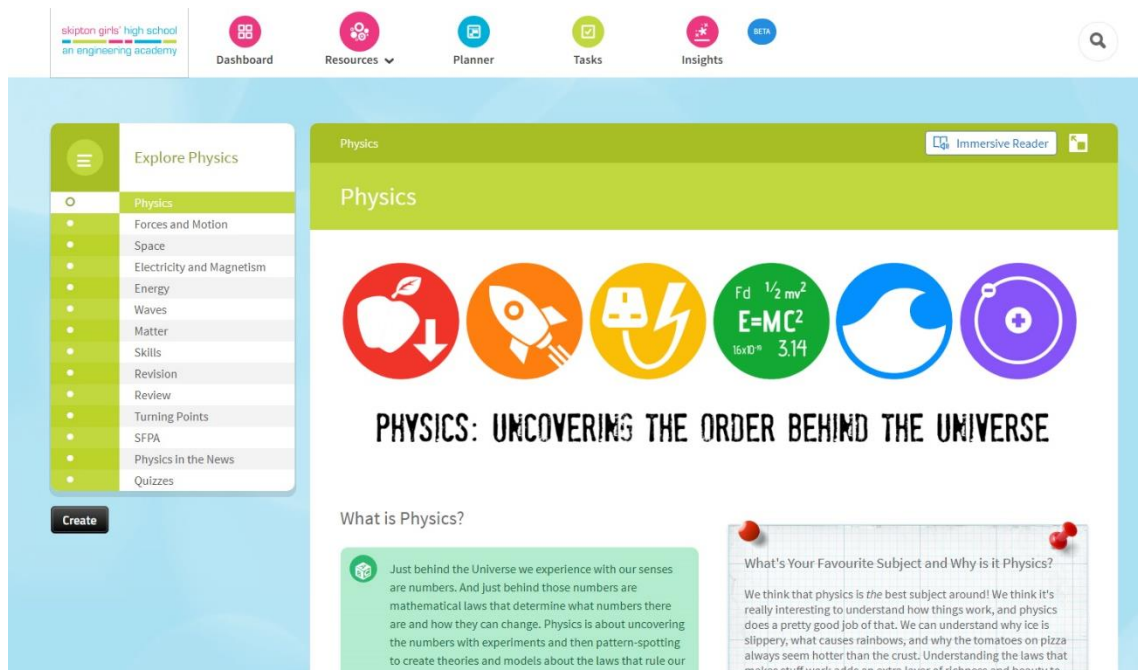


Firefly - Virtual Learning Environment

As every student in school has access to a laptop device, all of your child's programmes of study appear on the school's VLE. They will use the VLE to access electronic resources, to complete assignments for their teachers, to contribute to discussions about their work, and to get support from their teachers. The VLE can be accessed from any computer connected to the internet, with no special software needed. It can also be used by parents to assist students with their work.

This VLE contains your child's courses. This is where you can find all lessons and learning resources. If your child is ill at home, your child will always be able to access resources and their lessons.

As a parent you will also be given your own username and password to access Firefly where you will



be able to access all of their courses. Extension work can also be accessed via the VLE.

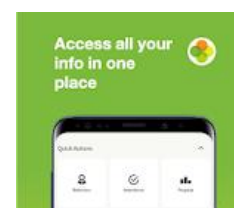
Communication via Arbor:



Getting Started with Arbor – Your Parent Portal

At Skipton Girls' High School, we use Arbor to keep parents and carers connected and informed. Arbor is an easy-to-use digital platform that brings together key information about your child in one place. You can access it either through the Arbor App on your phone or via the online Parent Portal.

Once your child joins us in Year 7, Arbor will be the main way we share important updates and information, including:



- Trips and Clubs – sign-ups, permissions, and details
- Attendance – view your child’s daily and historical attendance records
- Behaviour – track positive behaviour points and any incidents
- Reports – access academic reports and progress updates
- Communication – receive messages from teachers and the school office

Accessing Arbor:

You will receive a welcome email from Arbor to your registered email address. This will contain a link to help you set your password and activate your account.

Once registered, you can:

- Download the Arbor App from the App Store (iPhone) or Google Play (Android)
- Or log in to the Parent Portal at <https://login.arbor.sc>

Already Using Arbor?

If you already have a child at another school that uses Arbor, Skipton Girls High School will automatically appear in your existing Arbor login. The same can be said for if you have other children that attend an Arbor school. You can simply switch between schools/students within the app or portal.

If you have any trouble accessing your account or need help using Arbor, please contact school. (email to follow)

The Key Stage 3 & Key Stage 4 Curriculum

During Key Stage 3 all students follow a broad, balanced and personalised curriculum, which includes all of the requirements of the National Curriculum but also extends beyond it. Subjects studied include English; Mathematics; Physics; Chemistry; Biology; French or Spanish; History; Geography; Art; Design Technology; Food Technology; Information Technology; Physical Education; Religious Education; PSHE; Music.

In all lessons in Key Stage 3 students are taught with students from their own year group. For some practical subjects, there are smaller groups. In Key Stage 4 our curriculum is increasingly “personalised” to the needs and interests of individual students, while still maintaining a breadth and balance.

Elements of Personal, Social, Health Education and Citizenship are taught in various subjects and there is a separate programme of SMSC, Careers Education and PSHE. Comprehensive advice is given to students when they are choosing their GCSE Options, by Personal Tutors, subject teachers and our own Careers Adviser.

Music Education

At SGHS we offer an 'In House' individual music tuition programme. A team of high-quality tutors are available who not only have a proven record in successful instrumental tutoring but many of whom continue to perform regularly at a professional level. The Music team also offer a range of other activities to supplement the programme giving students access to a range of ensembles in school and coaching in aural work and music theory.

We believe that providing access to professional tutors who can inspire our students and provide tuition to a high standard will not only result in pupils gaining a thorough knowledge of instrumental technique and performance practice, but also allow them to pass high level graded examinations.

Instrumental teaching is currently offered in the following areas: Violin; Viola; Cello; Double Bass; Guitars; Voice; Piano; Keyboard; Percussion; Flute; Clarinet; Saxophone; Bassoon; Ukulele. If the instrument you're looking for doesn't appear on the list, please talk to the Music Department as it is likely that we are able to accommodate your needs.



Modern Foreign Languages

Your child will study one foreign language in Year 7. This year we will have two French classes and two Spanish classes. Your child's language selection will be allocated according to their teaching group. As they move up through the school your child will have the opportunity to study German as a second language.

Faculty Subject Support

Students are offered lunchtime support clubs across most subjects, arranged through individual faculties.

Extra-curricular and Enrichment activities

The school offers a variety of extra-curricular activities. Post 16 students and staff organise a wide selection of clubs and societies in the lunch hour. These vary from year to year and have in the past included Science Club, Computer Club, Drama Club, Dance Club, Art Club, Film Club, to name just a few. There are also sporting and musical activities arranged by members of staff, including the Junior and Senior choirs and orchestra. Each House arranges many fund-raising events to support local, national and international causes and charities.

The Duke of Edinburgh's Award Scheme flourishes in the school with many students achieving awards. In the process they are involved in many activities encompassing the Arts, community services, crafts and outdoor pursuits.

The regular drama productions and music concerts give students a chance to perform in public and there are opportunities for residential experiences, exchanges and visits abroad. Other visits, both recreational and educational, to theatres and a variety of places of interest take place regularly.



Other Information

Guidelines on Home Learning

We promote independent working beyond the classroom to support classroom learning and to help students develop skills they need for successful lifelong achievement. From Year 7 you will be able to see notes about home learning tasks on your child's Firefly page. Tasks might include research, extended reading, writing, problem solving and may be set over a number of weeks. Please encourage your child to complete tasks and meet the deadlines set to develop independent learning skills.



Personal Property

Students are encouraged to look after their property, thus contributing to the maintenance of a safe and pleasant environment. All property should be clearly marked with the owner's name. Students are allocated a locker in which to keep their books and belongings. Parents are asked to ensure that their children do not bring valuables or large sums of money to school. If this is occasionally unavoidable the items in question should be handed in to Student Services for safekeeping until the end of the school day. During PE lessons, purses, watches etc. can be safely stored in a "valuables" box under the supervision of the PE staff. Lost property may be claimed from Student Services. Parents are asked to note that it is not possible for the school to insure students' property on school premises.

Mobile Phones

The widespread ownership of mobile phones among young people requires that school staff, teachers, students, parents and carers take steps to ensure that mobile phones are used responsibly in schools. We operate a no-mobile phones policy during school hours. To find out further information please read our 'Acceptable Use of Mobile Phone Policy' found on our school website. Mobile phones should be switched off and kept completely out of sight during classroom lessons and whilst in the school building. Every student has a personal locker to keep their mobile phone locked in during the school day.

Parents/carers are reminded that in cases of emergency, the school reception remains a vital and appropriate point of contact and can ensure your child is reached quickly and assisted in the appropriate way.

Parents in Partnership

SGHS has a flourishing Parents in Partnership group. The group is currently involved in working with SLT on aspects of school improvement. If you are interested in discussing this group further, please contact **Mrs V Fox – Assistant Headteacher:** foxv@sghs.org.uk

Friends of SGHS

We have also launched a 'Friends of SGHS' association with the aim of both fundraising and organising social events. We would very much welcome new parents to join this group. If you are interested, please contact: **Mrs J Busfield**
- **Skipton Hub Business Manager:**
busfieldj@sghs.org.uk



Transport

Whilst travelling on buses students must behave sensibly and remain seated at all times. Where seat belts are provided these should be fastened. Although the students are outside of school they still represent SGHS and their conduct must reflect this. All information regarding bus timetables, routes and passes can be obtained from: Home to School Transport, North Yorkshire Education Office: **01609 533693**.

Safety and Security

All students will be given instructions on correct procedure in the event of an emergency. Specific instructions as regards exit routes are displayed in every classroom. Fire drills are held regularly. Students are also instructed about what they should do if they are suspicious about any unfamiliar people on the school site.

Charging For School Activities

The School has its own policy in line with legal requirements. All charges will be made via the ParentPay system as explained above.

The school will provide all materials necessary for the education of the students, but smaller stationery items such as pens, pencils, erasers, flashcards and maths equipment (except calculators) may be purchased at cost from the school cash shop, run in the library at break and lunchtimes. For maths, the following scientific calculator is recommended: Casio fx-85GT CW. In practical subjects, students who indicate beforehand a wish to keep the finished product may be charged a sum for materials.

The school may seek voluntary contributions in connection with any activity in school hours, provided these contributions are voluntary and a parent's inability or unwillingness to pay do not prevent a child from taking part in any activity. Activities outside school are likely to be charged at cost. For residential visits the cost of board and lodging will generally be charged. For all activities the school has limited funds available to help Pupil Premium families; application should be made to **Mrs F McMillan, Deputy Headteacher**.



All year groups have laptops. The school is keen to continue this and to ensure that parents are not prevented from taking part for financial reasons. More details of this scheme can be found on the school website.

The school will ask a parent to pay for any damage caused wilfully by a student.

Examination entry fees are paid by the school on the basis that "All students who have followed the course are entered for the appropriate examination on the basis of hard work and commitment, not on ability to pass rather than fail."

Should the school feel an entry is not justified on these grounds, we reserve the right to withhold entry. There may be the opportunity to re-sit exams to try to reach a higher grade. In these circumstances the school will always pay for the first entry, but the cost of further re-sit entries may



be passed on to students.

Pupil Premium

At Skipton Girls' High School, we have an aspiration to provide our students with a first-class education and we believe that no child should be left behind. Our ethos is that learning should not be affected by financial constraints; moreover, that passion, thirst for knowledge, dedication and commitment to learning make the difference between success and failure, and we are determined to ensure that our students are given every chance to realise their full potential.

Pupil Premium is a government initiative designed to target resources in schools to support the progress and learning of those who may have a financial disadvantage. Specifically, Pupil Premium money is provided to the school to support the education of those students who are:

- Currently on Free School Meals (FSM) or who have been on FSM at any point over the past 6 years
- Children who have been looked after continuously for at least 6 months (LAC)
- Children adopted from care

- Service children –children of Service personnel (who have been service personnel during the last years) or those in receipt of a child pension from the Ministry of Defence.

If you think that your child may qualify for Free School Meals, but they are not currently in receipt of these, you should apply directly to NYCC using the Free School Meal form available from Student Services or on the School Website.

Pupil Premium is designed to help schools raise the attainment of students who may face financial challenges and ‘close the gap’ that currently exists between more and less affluent children at a national level. It is paid to schools in respect of pupils deemed eligible in Year 7 to Year 11 only.

Schools in England also receive Pupil Premium for children adopted from care and can claim for children who have ceased to be looked after by a local authority in England and Wales. To enable Skipton Girls’ High School to claim Pupil Premium funding for a child who is in the care of an English local authority or an adopted young person, you will need to inform the school about your child and provide supporting evidence. You will need to self-declare to ensure that the information can be used to trigger additional payments to the school within the academic year.

Please pass this information to **Mrs F McMillan Deputy Headteacher**, mcmillanf@sghs.org.uk

As a school we appreciate that this information is sensitive and your individual child’s data will remain strictly confidential.

If we receive Pupil Premium funding for your child during their time at SGHS, they will automatically receive:

- A laptop funded by school
- A contribution towards uniform costs
- £50 per year towards educational visits
- A stationery pack

We will provide them with all the support they require with their learning (as we do for all our students) to ensure they are always on a level playing field with their peers. Please see Pupil Premium page on our school website for our full strategy for supporting learners of Pupil Premium funding. If you feel that you need additional support from the above please contact **Mrs F McMillan – Deputy Headteacher**.

Year 7 Residential

For the last 3 years we have successfully run a residential visit for the whole of Year 7. The purpose for this is to encourage our students to develop new friendships, engage and interact with new students, strengthen communication and teamwork skills and cultivate a year group identity. On Monday 3rd November 2025 Year 7 will visit Carlton Lodge Activity Centre for the week. The year group will visit with two teaching groups on Monday-Wednesday and the other two groups Wednesday – Friday. This will take place immediately after the half term break.

This has been a fabulous and extremely successful visit for students which has really helped them establish and embed new friendships whilst creating wonderful memories of year 7.

We encourage the whole year group to participate, however, if any student chooses not to attend the residential they are still required to be in school.

Vision and Values

Educational Philosophy

The aim of Skipton Girls' High School is to provide an education for our highly able learners which enable them to grow and learn as individuals, to take responsibility for their own learning and to be curious about the world around them.

Care, Curriculum, Community and Cultivation are at the heart of all that we do.



CARE

We treat each other with kindness and respect.
We work together to build a safe and supportive environment to which we all belong. Every voice matters.
We are safe to take risks and we learn from our mistakes.



COMMUNITY

We are a community of diverse voices and ideas. We listen, reflect and learn from one another.
We innovate and draw strength through collaboration and connection with each other.



CURRICULUM

We value academic excellence.
We enjoy challenge and are ambitious about our future.
We are creative, curious and innovative learners.



CULTIVATION

We use our voices to nurture talent, promote leadership and foster confidence.
We seek opportunities to enrich our lives through education and we let nothing stand in our way.

British Values

We embrace the Department for Education's five-part definition of British Values:

- Democracy
- The rule of law
- Individual liberty
- Mutual respect
- Tolerance of those of different faiths and beliefs

Students at Skipton Girls' High School encounter these principles throughout everyday school. Our promotion of spiritual, moral, social and cultural understanding has been described by Ofsted as being 'Outstanding'.

Listed below are some examples of how we promote these values in our school community:

Democracy

Our school leadership groups play a strong role in our school. They are elected by students and contribute to school improvement through authentic and meaningful opportunities and activities.

Student voice feedback and questionnaires are conducted throughout the year and as part of our Faculty Review Process. We believe that the active participation of our students will sow the seeds for a more sophisticated understanding of democracy in the future e.g. our recent Mock Election, Parliament links and our Democracy events held during PSHE days.

The Rule of Law

Our pupils will encounter rules and laws throughout their entire lives. We want our students to understand that whether these laws govern the class, the school, the local community or the country, they are set for good reasons and must be adhered to.

This understanding of the importance of rules will be consistently reinforced through gatherings and our curriculum. The involvement of our students in the understanding of the school rules helps them to understand the reasons behind the rules and the consequences if they are broken. Throughout the year we welcome visits from members of the wider public. We believe that clear explanations and real life stories emphasise the importance of the rule of law for our students.

Individual Liberty

We have created a culture so that our students are in a safe environment where choices and freedoms are encouraged. In lessons and enrichment/ extra-curricular activities, we encourage students to reflect and make choices.

Faculties build in choice and guide students to make choices which challenge them. We offer a range of enrichment activities which pupils have the freedom to choose from, based on their interests. Through our PSHE/ Well-Being days, we educate students in their rights and personal freedoms as well as supporting them in recognising how to exercise these freedoms safely. We believe that this will encourage students to value the right of the individual liberty and develop a strong foundation for later life.

Mutual Respect

Respect is paramount as a citizen of the UK and the world.

Students learn to treat each other and staff with great respect as this is our central ethos. Respecting the rights of others, including their right to their own opinions is fundamental to learning.

Tolerance of those of different faiths and beliefs

At Skipton Girls' High School we offer a culturally rich and diverse curriculum in which all major religions are studied and respected. We believe that tolerance is gained through knowledge and understanding. Through our curriculum and the routines of our daily school life, we strive to demonstrate tolerance and help children to become knowledgeable and responsible British citizens.

All students in Year 10 complete a full GCSE in Religious Studies.